



It's OFFICIAL—Evergreen Welcomes FIVE Churches

Evergreen welcomes our first new church plant and other churches from outside the Region at the 3rd Annual Meeting, October 14 and 15 at Martin Luther King, Jr. Memorial Baptist Church. New Beginnings Christian Fellowship, started in Renton Washington in August 2005, was officially welcomed at the Annual Meeting with a large delegation present to mark the occasion. Each church was presented a candle holder, as pictured on the insert. Welcome New Beginnings, Rev. Dr. Leslie D. Braxton, Senior Pastor and Rev. Allen Benson, Assistant to the Pastor and Associ-

ate for Outreach! The General Board of American Baptist Churches, USA will vote in November to make it official for ABC/USA. Meanwhile, National Ministries has recognized them and awarded a small grant as a New Church. Congratulations New Beginnings!

California and Church of the Covenant, Palmer Alaska, Rev. Howard Bess, pastor. Evergreen is blessed to have these new partners in ministry. We grew by almost 1/5 in number of churches in one annual meeting! There is much to do— together working with God, outside the gates all things are possible!

We also welcome First Baptist Church, Chico, California, Rev. Ted Sandberg, Pastor; Shell Ridge Community Church, Walnut Creek, California, Rev. Greg Ledbetter, Pastor; Fairview Community Church, Costa Mesa,

Spiritual Renewal...is this the time for you? Come to Orlando in 2006!

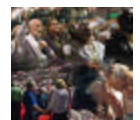


Spiritual Formation Conference presented by American Baptist Churches USA April 17-20, 2006, Orlando, FL, USA

LORD; be strong, and let your heart take courage; wait for the LORD!"

For More Information:
<http://www.ministerscouncil.com/WaitontheLordInformation.aspx>

Register now: <http://www.ministerscouncil.com/Wait%20on%20the%20Lord/WOTLRegistrationInfo.aspx>



Psalm 27:14: "Wait for the

Inside this issue:

What is the Missional Church?	2
Request to Help Rebuild Middle School Library	3
International Ministries Xtreme Team Opportunity	3
Ministry Flourishes-Pastoral Leadership Program	4
Annual Meeting Snapshots	insert
Christian Rock Concert & Youth Lock-In	5
Calendar of Upcoming Events	6

FOR YOUR PLANNING...

• *Plan to attend the Martin Luther King, Jr. Day Worship Service on Monday, January 16, 2006...The Rev. Dr. J. Alfred Smith, guest preacher.*

BOOK RECOMMENDATIONS

Two books were mentioned in my (Marcia Patton) verbal remarks at our Annual Meeting. I'd like to name them again here and recommend particularly the securing and reading of the first.

The Wolf Shall Dwell with the Lamb: A Spirituality for Leadership in a Multicultural Community



by Eric H. F. Law is a must read for Evergreen leaders.

Thanks to Rev. Catherine Fransson for first suggesting that we read it. We are willing to order multiple copies (so shipping charges will be less or non-existent) for folks if you call the Association of office or email (253-859-2226 or marcia@ea-abc.org)

Eric Law is an Episcopalian priest and a

second generation Chinese-American. He looks theologically and practically at how one must approach a group as leader. Because of his background, Eric has led in situations where he has power and where he has not been in a position of power. He does not shy away from naming the reality of "white-privilege" but also acknowledges that there are situations when any leader can step on the toes of others.

We are working toward having Eric Law be the presenter at a major conference in Evergreen in 2006.

Religion and Public Life in the Pacific Northwest: the None Zone edited by Patricia O'connell Killen and Mark Silk, published by Alta Mira Press, Walnut Creek, CA, 2004. This is a fairly technical book. Some very relevant quotes may be all you want from it.

"First, the Pacific Northwest has the low-

est affiliation with religious institutions of any region in the United States. In 2000 Oregon ranked lowest with 35.2 percent of its population affiliated with a religious group, followed by Washington with a 38.1 percent and Alaska with a 39.8 percent. Together these states have a 37.2 percent adherence rate in contrast to the



nation's 59.4 percent rate, according to the North American Religion Atlas (NARA). With nearly two-thirds of its population 'unchurched' the Pacific Northwest states frequently are described as secular and godless." (p. 28)

"A second basic fact complicates this assessment... More than two-thirds of adults in Oregon and Washington identify themselves with a religious denomination or tradition, according to the American Reli-

(Continued on page 4)

What is the Missional Church?

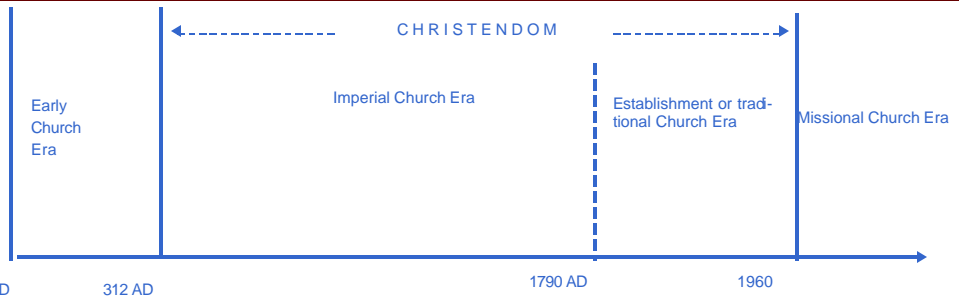
You've heard the phrase recently, "missional church." It was in this newsletter last month as part of the Vision statement.

The missional church is the descriptive term of what our churches must become to adequately relate in our society today.

Because society has changed so much in the last 50 years, the church needs to be different in how it responds.

Let me give you some comparisons. In the Christendom (or traditional or establishment church) era at the personal level our emphasis has been on "conversion of the other" that needs to shift to "discipleship of self" or paying attention to one's own spiritual growth.

At the traditional church level we have



worked on getting members in the church, that needs to shift to "discipleship of the members" or helping all members find her or his particular gifts and figure out how to put those gifts best at work in the world.

At the community level in the traditional era churches counted how many members each had (if there were enough churches in a community, they had most of the community in church). The missional church instead of counting num-

bers, asks the question, "what is the church's influence in the community" or what difference does it make that the church is in this community?

At the global ministry level, the question asked by the traditional church was, "how many dollars did you send to mission?" The question of the missional church is, "how are we participating in mission locally and globally?"

The Missional Church sees itself as missionary by nature, rather than

(Continued on page 3)

Evergreen Churches and Members Invited to Help Rebuild a MS Library Destroyed By Hurricane Katrina

From the Salt Lake City

E Notes, a weekly electronic newsletter:

“We have just received a request from Jacci White, National Coordinator, Volunteers In Mission with ABC Valley Forge asking First Baptist Church Salt Lake to help in rebuilding a library for a middle school that was destroyed in Hurricane Katrina. The request came from an ABC Church. There are 400 middle school students who have no books of any sort. If you would like to help with this project you can bring good used books, new books or donations. The books need to be age appropriate for middle school children. Donations can be left at the office.”

Find out how you can help. Contact First

Baptist Church Salt Lake City, UT by telephone at 801-582-4921 or email fbcslc3@xmission.com or Jacci White at 1-800-222-3872, extension 2449.

Missional Church

(Continued from page 2)

having missions as a “program” of the church. God is seen as a missionary God who heals and brings justice through God’s church, rather than the church simply being a “sending agency” for God.

Finally, for this edition, the Missional church sees mission as a God centered activity instead of seeing missions as an activity of the church.

I hope you can take this information and have discussions about it in your local church. Ask what it means to

...the Missional church sees mission as a God centered activity instead of seeing missions as an activity of the church.

your congregation to think of yourselves as a missional church. I would be glad to come to any congregation for a discussion about this, too.

Marcia

International Ministries XTREME Team

The Xtreme Team will launch its ninth year of ministry by fielding two separate teams of young adults to South America in 2006. One team has been invited by the National Baptist Convention and ABC missionaries Ann and Bruce Borquist to experience mission in Brazil. The other team has been invited by the

Baptist Union and ABC missionaries Iris and Mario Morales to experience mission in Bolivia.

The Xtreme Team is designed to connect young adults with the global mission of American Baptists. Its purpose is to grow a pas-

Missionary Journal

(Continued from insert)

Just as it was true with the hurricanes, when crisis hits, the poor suffer the most. Many IM missionaries were involved with distributing relief funds after the Tsunami devastated Southeast Asia, just as many churches and home missionaries are rolling up their sleeves now in Texas, Mississippi, and Louisiana.

We simply don't have to make this an either-or situation. The Apostle Paul was dependent on churches to fund his missionary journeys but the Corinthian letters tell us clearly that in the midst of his mission work he took up collections for the saints in Jerusalem who were suffering from famine. Speaking of the Macedonians Paul writes in II Cor. 8, "And they did not do as we expected, but they gave themselves first to the Lord and then to us in keeping with God's will." Believers from Europe and Asia Minor gave to help their brothers and sisters in Palestine, just as Palestinian Christians had given to fund Paul's trips to Asia Minor and Europe. To the statement, "We need to take care of our own first," the kingdom response is that "our own" is really made up of brothers and sisters all around the world and that God has called us to care for all people. Simply put, there is no us and them... It's all us, and there is no longer a them.

Thank you for your giving to the World Mission Offering and to the One Great Hour of Sharing Offering.

sion and interest in mission for the here and now as well as to cultivate global mission leadership for the future.

The Xtreme Team is open to American Baptist young adults between the ages of 19-29. This mission experi-

(Continued on page 4)

Book Recommendations

(Continued from page 2)

gious Identification Survey (ARIS), which did not include survey data from Alaska. ... Seventy-one percent of adults in Oregon and 69 percent in Washington identify with a religious group. By this second measure of religiosity, most adults in the region are religious.” (p. 28)

“The third basic fact about religion in the Pacific Northwest today also emerges from the ARIS study. Together, Washington and Oregon lead the nation in the number of adults who report that they have no religious identification, 25 percent. The national figure is 14.1 percent. In the Pacific Northwest, these “Nones” constitute a group twice as large as the single largest denomination in the region. ... The overwhelming majority of people in this category exhibit beliefs similar to those of individuals who identify with a denomination or religious tradition.

“These three facts provide the board contours of the region’s religious environment. A bit more than a third of the population identify and participate institutionally, a slightly larger portion identify but do not

participate, and a quarter or more of adults neither identify nor participate.” (pp 28-29).

Xtreme Teams

(Continued from page 3)

ence begins with orientation on June 28 and ends August 5 at the World Mission Conference. The cost of \$3900 covers all the expenses for the trip.

Those interested can visit the website at www.xtremeteamonline.org to read journals, see pictures, learn more about the program, and submit an application. Applications for 2006 teams will be accepted into

January for those interested to Xplore God’s word and world, Xamine their own priorities, Xperience mission and those involved in it, Xercise their faith, Xtend their hands, and Xpand their world view.

Ministry Flourishes: Sustaining Pastoral Excellence

The Pastoral Leadership Program (PLP) is designed to inspire, nourish and deepen the leadership skills of some of the country’s most dedicated ecumenical leaders.

Led by director, Dr. Marianne LaBarre, ably assisted by Espy Borboa and the Rev. Helen Thomas Chaffen, the program welcomed 22 participants for its second year, representing seven faith traditions. Enthusiastic participants commented:

? I am more reflective about myself, my work and my calling; more aware of the dynamics in my parish and more proactive in dealing with situations.

? The PLP program has helped me tremendously as I’ve stepped into my new role in the parish. I feel more at peace with who I am and how I relate to others.

? I am amazed at what has been evoked, the richness of the reflection and sharing.

This process is challenging, but necessary! Transforming!

Join us at one of our information sessions in 2005 – 2006:

**December 1, 2005 8:00 - 9:30 am
McGoldrick Commons Hunthausen**

(Continued on page 7)

Annual Meeting 2005



Rev. Dr. Paul Nagano,
Guest Speaker



Jim Erickson & Sylvia Benefiel
perform on flute, piccolo and a
saw.



A Royal Priesthood, Guest performers at the Hurricane Relief
Benefit Concert



EBA Pastors also singers—J. Winbush, C. Price, S.
Weisser, L. Balcom, J. Gay, I. Hart & Sarah Welton



Florence & Paul Nagano, Florence Li and the Asian Caucus



MLK AGAPE Youth Choir



Rev. Dr. Marcia Patton explains the
lighted candles and holders engraved with
"Evergreen" representing the 34 member
churches in the Association.



Florence Li & Dr. Yosh
Nakagawa



Perla & Gus Belo along with others, listen to recent ordinand,
Yuki Sakiyama during group discussion on vision



Host Pastor, Rev. Herbert Carey, Chair, Ken Curl, Deacon
Adrienne Lawrence and Minister Lyndon McKinney



Clem and Curtis pose.

Linda Ishimitsu accompanies Yuko Ishimaru



Akio Yanagihara,
photographer—Captured!!!

ABSW Leadership Conference - 2006 With Strength of Heart and Mind: Envisioning Worship Renewal (Visit abswplc.net)

American Baptist Seminary of the West invites you to our annual January continuing education event for leaders in pastoral ministry. From across the west, church professionals and lay persons will gather **January 9, 10, and 11** at the beautiful Vallombrosa Center in Menlo Park (San Francisco Peninsula), for fellowship in a relaxed environment for mutual learning.

Planned by a collegial team of ministry professionals and ABSW faculty, the Pastoral Leadership Conference focuses each year on a topic of interest to all who love and serve the church, including pastoral staffpersons, chaplains, church educators, and those serving in church-related agencies. We welcome the wisdom of those who have retired from fulltime ministry, as well as the contributions of seminary students, who bring fresh questions and ideas into our midst. We are also pleased to have church lay leaders join us for this stimulating event.

During our three days together, we interact with conference leaders who are noted scholars and practitioners in their fields. We share together in worship and study. We build closer bonds with our sisters and brothers in ministry. American Baptist Seminary of the West is dedicated to offering continuing education gatherings of quality and spirit to its wide community of church leaders.

We look forward to seeing you this coming January, as we share a vision for worship renewal in the midst of changing times. Please join us for the ABSW Pastoral Leadership Conference, "*With Strength of Heart and Mind: Envisioning Worship Renewal*," January 9 through 11, 2006.

Missionary Journal: Why Should We... Gary and Mylinda Baits

Why should we keep giving to foreign missions when there is so much need for disaster relief here in the United States?" My guess is that a lot of people are asking questions like this, either out loud or in their heads. The question may be especially relevant this month for American Baptists as they give to the World Mission Offering.

My gut response to this question is 'GIVE TO BOTH.' As American Baptist missionaries we hope and pray that churches and individuals are giving to hurricane relief, and we encourage you to do so through "One Great Hour of Sharing" with ABCUSA. Giving in times of disaster is the Christian thing to do, and historically, Christians have been generous in the face of tragedy. Our Costa Rican brothers and sisters have been incredibly compassionate in asking us if we have friends and relatives in the gulf. Their compassion has no borders. I have found that to be true of so many of you in the states as we spent last year in many of your churches; when there is a need, the body of Christ responds.

At the same time, crises and disasters do not erase the words of Christ given in the great commission. One could even say that in the face of such crises, the need for evangelism, strong disciples and strong churches becomes even more crucial. Churches and Christian individuals in the U.S. are able to help flood victims because someone invested in them as a church. Churches have trained pastors and leaders and adequate buildings because someone invested in them. Christian chaplains, social workers, and volunteer disaster relief workers (like those from ABMen of the Great River Region) are all able to respond because of faithful giving to ministry and mission.

Here in Costa Rica, evangelical Christians are still a real minority (5% to 15% of the total population) and Baptists constitute a minority within that minority. In a country where the cost of living is not very different from that of the U.S., a typical worker makes \$500 per month and a typical Baptist pastor may make half that much. So the need for trained leaders and the need for resources is an ongoing reality. Many IM missionaries serve in even poorer countries, and the daily needs of the people are just as intense, though less visible and less obvious, than the needs of hurricane victims. *(continued on page 3)*

Christian Rock Band Concert & Fellowship Night Lock-In

Featuring Threefold

Friday Evening—November 18, 2005

First Baptist Church 22800—56th Ave W Mountlake Terrace WA

Call 425-771-4804 for more information

Enjoy pizza dinner, concert, games, Bible Study, fellowship, movies, music and
fun!!

**Bring your sleeping bag, pillow, favorite Christian CD's and most important...a friend!
Parent permission slips are required. Breakfast will be served and parent pickup is at
9:30 AM Saturday Morning**

AGES 10 and up.

Yahoo Groups

We are grateful to Leland Ross of Fremont Baptist Church for setting up an online "*meeting place for sharing and discussion among members and friends of the churches of the Evergreen Association of American Baptist Churches*".

This can be found at <http://groups.yahoo.com/group/EvergreenBaptists>

This is another way of getting information out about things that are happening within our churches or within our association. For example, a church could post details of its anniversary celebration or other events

to which the wider church community is invited. Anyone can view messages to the site <http://groups.yahoo.com/group/EvergreenBaptists>.

However, in order to send email messages to the group, to receive email messages sent to the group, to view/post events on the calendar, or view/post photos, one must first sign-up as a yahoo member and then as a member of the Evergreen-Baptists group. The process takes about 5 minutes. (You will have

the option of receiving an email whenever anything is sent or of receiving no emails and simply checking the web site at your leisure.)

If you have any interest in building connections or sharing information with other Evergreen churches, this Yahoo group may be one way of doing this.

Ministry Flourishes

(Continued from page 4)

Hall/Seattle University, 901 12th Avenue,
and

February 22, 2006, 11:45 am - 1:15 pm,
University Baptist Church
4554 12th Avenue NE

EVERGREEN ASSOCIATION OF
AMERICAN BAPTIST CHURCHES



409 Third Avenue South Suite A
Kent WA 98032 - 5843
Phone: 253-859-2226
Fax: 253-859-1537
Email: eba@ea-abc.org

Web Address: www.ea-abc.org

Non-Profit
Organization
US
PAID
Kent WA
Permit No. 451

Evergreen Notes, the newsletter for the member Churches, ecumenical partners, national affiliates, and friends of the Evergreen Association of American Baptist Churches is published monthly.

Please submit articles by the 25th of the month prior to expected publication.

You are encouraged to copy and/or reprint information and articles as you choose for your congregation (s).

Happy Thanksgiving!

Rev. Dr. Marcia J. Patton, Executive Minister

CALENDAR OF UPCOMING EVENTS

Mission Statement

Being a culturally diverse people who are one in Christ and who value the liberties of our American Baptist Heritage, the Evergreen Baptist Association will

- Build bridges between communities;
- Provide resources to equip member churches to share Christ, and teach God's word; and
- Translate our unity to the world.

NOVEMBER

- 4-5 ACT Weekend
- 7—Executive Committee Meeting
- **12—EBA Association Board Meeting, 9 AM, Wedgwood Community Church**
- **17 –20 ABCUSA General Board Mtg, Greenlake WI**
- 24-25—EBA Offices closed for Thanksgiving

DECEMBER

- **2** Executive Committee meeting, Busch Gardens
- 23-26— EBA Offices closed for Christmas
- 30—EBA Offices closed for

New Year

JANUARY

- 2 EBA Offices closed
- 6—7 ACT Weekend
- 16 MLK Day Worship

FEBRUARY

- 10—11 ACT Weekend

APRIL

- 16 RESURRECTION SUNDAY!!
- 17—20 ABCUSA "Wait on the Lord" Pastors' Conference, Orlando FL
- 28—29 ACT Weekend